



# PV & ESS

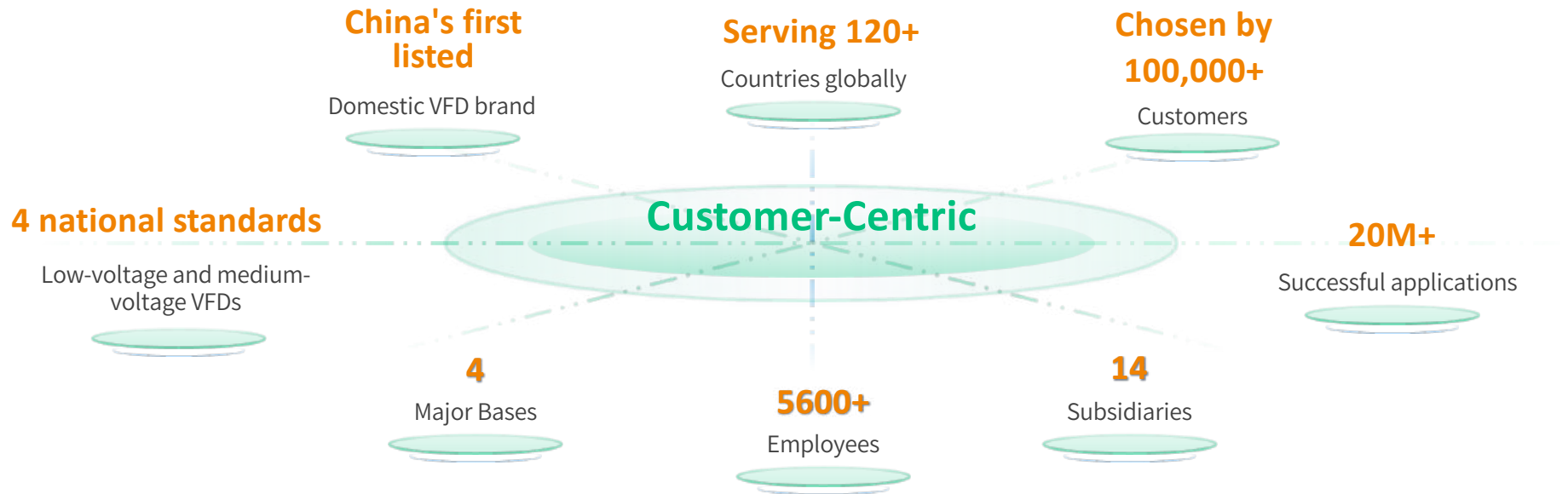
## Product Catalogue

**invt**  
[www.invt.com](http://www.invt.com)

# 20+ Years of Journey, Advancing Towards High-Quality Development



INVT ( 002334 ) provides competitive, specialized product solutions and technical services to global customers, leveraging its leading product technology strength and extensive industry practice to support the sustainable development of global customers.



# Global Footprint



Global Markets

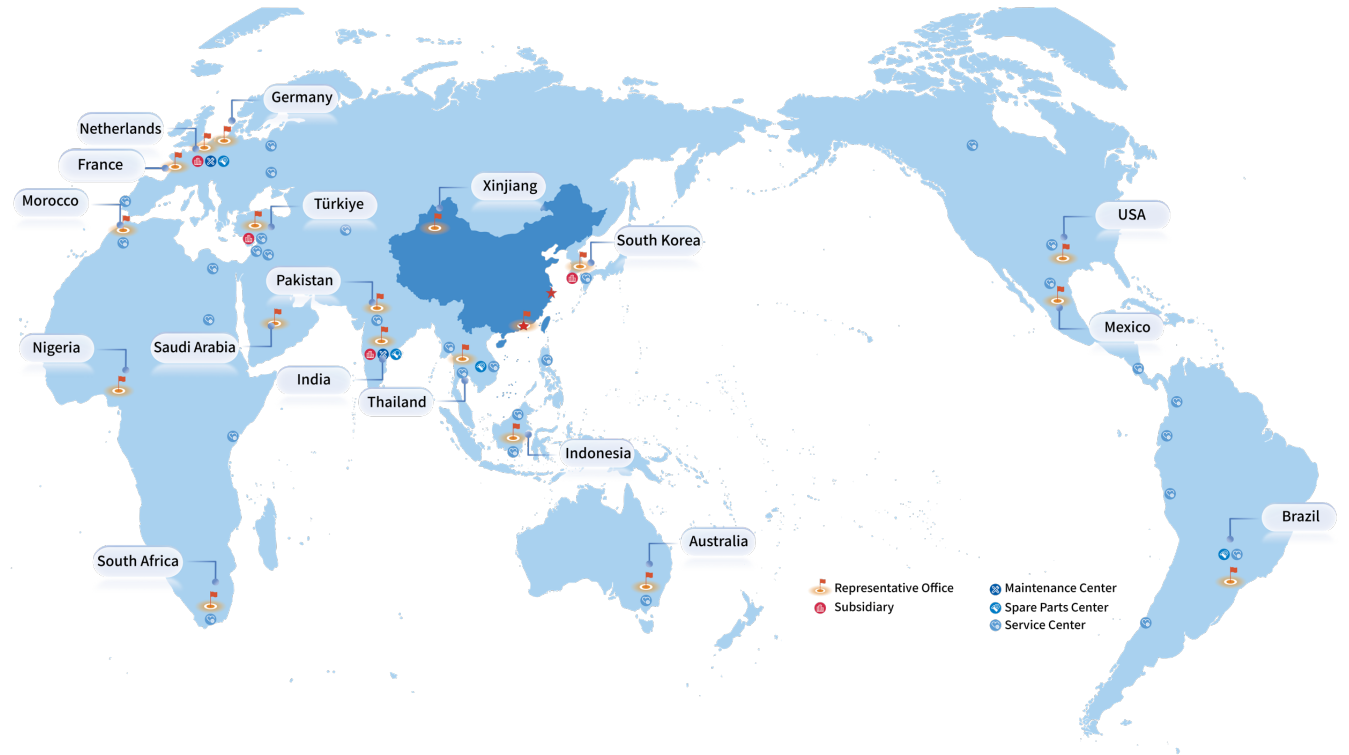


Channel Partners



Service Centers

China	400+	135
Asia Pacific	90+	13
India	120+	11
Middle East	50+	4
Africa	60+	3
Central Asia	60+	2
Europe	110+	4
Americas	120+	14



120+

Countries and Regions

1000+

Channel Partners

18

Overseas Representative Offices

5

Overseas Subsidiaries

40+

Domestic Offices

4

Bases

180+

Service Centers

# Continuous High-Intensity R&D Investment to Maintain Product Competitiveness



**23** years of

Technological Experience

**25%**

of Employees in R&D

**10%**

R&D Investment

**5**

R&D centers

**1800+**

Granted Patents

**480+**

Granted Invention Patents

## Hardware Development Library

Component Library

Preferred Device Library

CBB Library

Material Failure Database

Technical Specification Library

Test Specification Library

Expertise Library

Corporate Standards Library

...

## Supporting Testing Facilities



Quality Management System Certifications: IATF 16949:2016 | ISO 9001:2015 | ISO/IEC 17025:2017 | ISO/TS 22163:2017

Environmental Management System Certification: ISO14001:2015

Occupational Health and Safety Management System Certification: ISO 45001:2018

Laboratory Accreditation : CNAS Certificate | TUV ACT Certificate | UL Laboratory Certificate | CE Certification

# Solar Storage Digital Factory: Scientific Management for Quality and On-Time Delivery

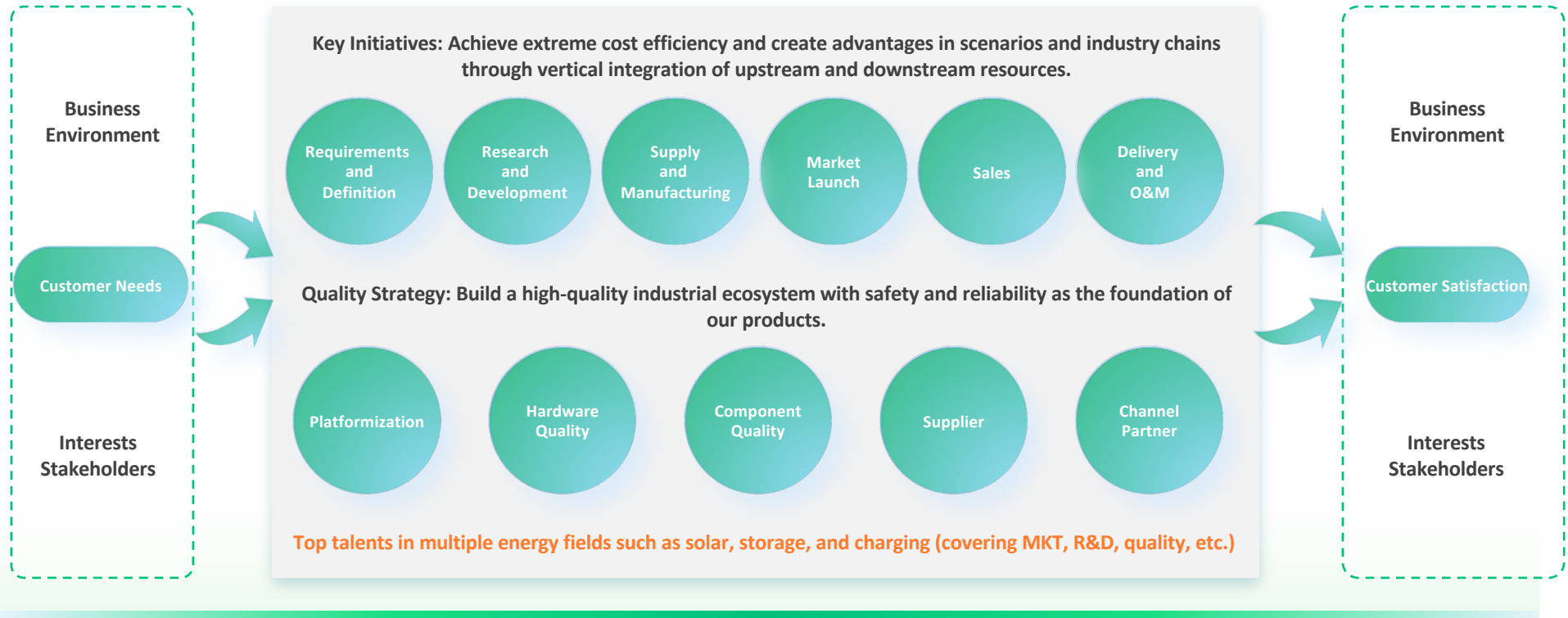


Zhongshan Manufacturing Base  
(330,000 square meters)

Solar Storage Capacity  
240,000+ Units

# Restructure quality management: Quality first, Safety foremost

Make quality (safe and reliable) the foundation of our existence, building a product-centered quality system



# Authoritative Certifications: Our Pledge to Quality



The product has successively passed certifications and tests by several authoritative domestic and international organizations such as CQC, TÜV, and ITS.

- |                  |                    |            |               |                   |           |          |         |     |
|------------------|--------------------|------------|---------------|-------------------|-----------|----------|---------|-----|
| IEC/EN 62109-1/2 | IEC/EN 61000-6-1/3 | IEC61683   | IEC60068      | IEC61727/IEC62116 | EN50549   | CEI 0-21 |         |     |
| VDE 4105         | VDE 4110           | VDE 4120   | NTS631 TYPE D | UNE217001         | UNE217002 | CEI 0-16 |         |     |
| RD467            | G98/G99            | NB/T 32004 | ABNT          | NC RfG            | BIS       | C10/C11  | NRS 097 | MEA |



# Full Series All-Scenario Products Matrix



## Grid-Tied Inverter



**XG100-125KTR-PRO**  
100-125kW (Three-Phase)



**XG75-80KTR-PRO**  
75-80kW (Three-Phase)



**XG50-70KTR**  
50-70kW (Three-Phase)



**XG36-50KTR-PRO**  
36-50kW (Three-Phase)



**XG17-33KTR-PRO**  
17-33kW (Three-Phase)



**XG3-15KTR-S**  
3-15kW (Three-Phase)



**XG3-10KTL**  
3-10kW (Single-Phase)



**XG1-5KTL-S**  
1-5kW (Single-phase)

## Hybrid Inverter



**XD30-60KTR**  
30-60kW (Three-phase)



**XD7-10KTL**  
7-10kW (Single-phase)



**XD5-12KTR**  
5-12kW (Three-phase)



**XD3-6KTL**  
3-6kW (Single-phase)



**XD3-6KTL-AIO**  
3-6kW (Single-phase All-in-One)

## ESS



**GRP2.56-SHV**  
High Voltage Lithium Battery



**GRP5.12-SLV**  
Low Voltage Lithium Battery



**GRP5.12-WLV**  
Low Voltage Lithium Battery

## Off-grid Inverter



**XN3624-MAX**  
3.6kW



**XN6548-MAX / XN12048-MAX**  
6kW & 12kW



## Higher yields

- DC over-provisioning up to 160%
- 20A string current for high-power modules
- Max. efficiency: 98.7%

## Ultra Safety

- IP66 protection
- AC/DC Type II surge protection
- Arc fault protection (AFCI)

## Worry-free

- Remote upgrade support
- Intelligent monitoring
- Simple installation & low O&M cost

## Compatibility


- Off-grid peak power: 2x rated power
- Three-phase unbalanced output support
- Dual battery support (Li/Lead-acid)

20A MPPT, 1.6x DC Over-Loading, Mainstream High-Power Compatible

invt

 **1.6x DC Over-Loading**

- Maximizes sunlight utilization, significantly boosting system generation and shortening ROI by 15%-20%.

 **Compatible with high-power modules**

- Compatible with mainstream high-power modules, eliminating concerns over model selection and future upgrade costs. This one-step solution ensures long-term peace of mind.

IP66 protection ensures stable operation even in harsh weather

invvt



### IP66 High Protection

- Unafraid of heavy rain, sandstorms, and other harsh weather, extending the equipment's lifespan by 3-5 years.



### AC/DC Dual-Stage Surge Protection

- Dual lightning protection design effectively resists lightning strikes, preventing downtime losses caused by lightning.

Supports smart load access to ensure critical devices remain powered without interruption



 **Intelligent Power Protection**

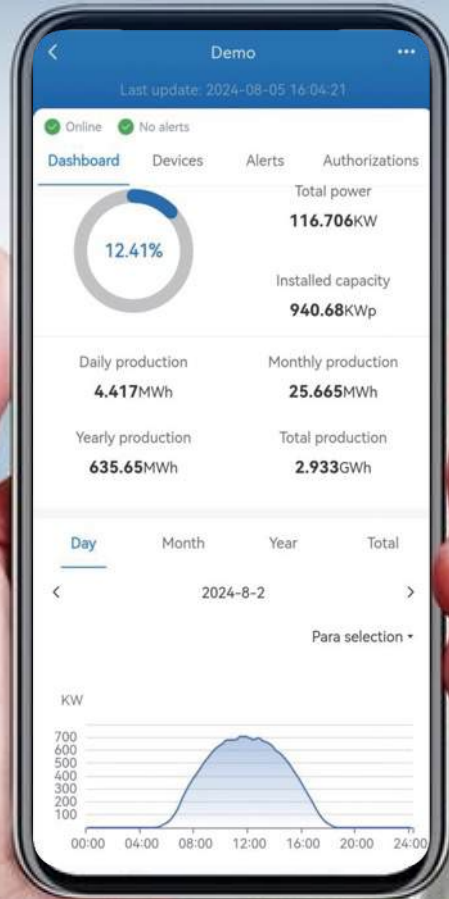
- supports smart load access, prioritizing the power supply to core devices.

 **Worry-free Experience**

- No manual intervention is needed; the system automatically manages the load, ensuring uninterrupted power for critical devices.

Only the XD7-10kW series is supported

# Remote intelligent management, worry-free maintenance



Switch Energy Modes Anytime

Remote Updates in Minutes

Fault Warnings with On-Screen Pop-ups

Real-time Load Monitoring

Monitor and Manage with One-Touch Access

One-Click Data Export Function



# Smart C&I Solar Storage Solution: Creating Optimal Electricity Costs



## Higher Generation

- Maximum String Current 20A,
- Up to 1.5 Times DC Overload Input

## Flexible Configuration

- Maximum Charge & Discharge Current 100A
- Up to 2 Times Peak Power Output
- Supports Multi-Device Parallel Connection

## Safety&Reliability

- Grid and Off-Grid Switching Time <10ms
- Arc Fault Protection AFCI (Optional)
- Smart IV Scanning and Diagnostic Function

## Simple O&M

- Web/App Intelligent Monitoring
- Easy Installation, Low Maintenance Cost
- Supports Remote Battery Upgrade

Flexibly matches mainstream high-power modules to ensure efficient generation



### Maximizing customer returns

- 4 MPPT, supports 150% PV module overconfiguration, enhancing overall returns
- Maximum efficiency of 98.4%, top-notch conversion efficiency



### Flexibly matches high-power modules

- String current of 20A, compatible with mainstream modules
- Future expansion without replacing the inverter

2 independent interfaces, supports mixing of new and old batteries



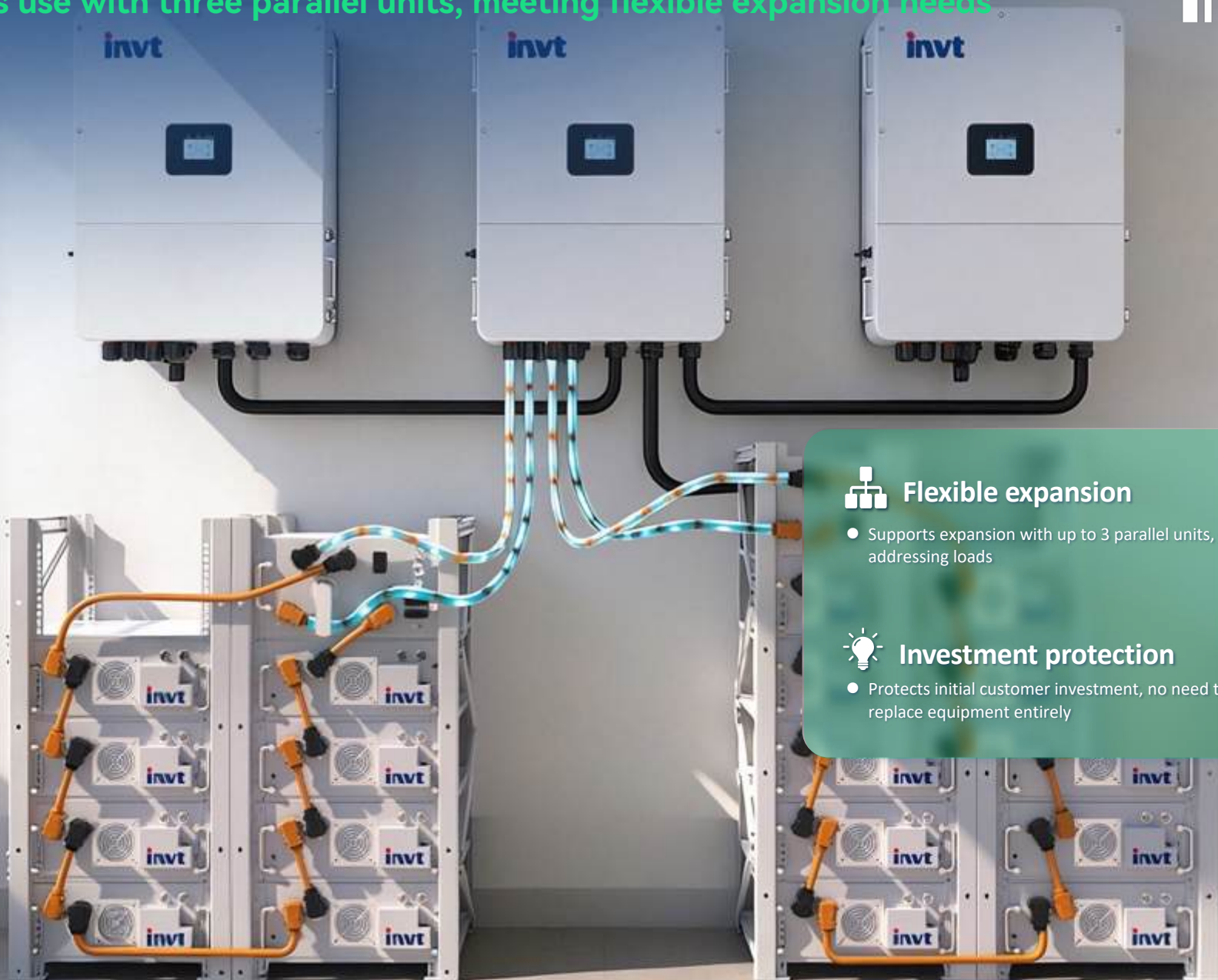
↔ Supports expansion with new and old batteries

- Equipped with 2 independent interfaces, supports expansion with different brand batteries, and allows mixing of new and old batteries

⚡ Rapid power backup

- Maximum battery charge and discharge current of 200A, more composed in dealing with sudden power outages

Supports use with three parallel units, meeting flexible expansion needs



### Flexible expansion

- Supports expansion with up to 3 parallel units, flexibly addressing loads



### Investment protection

- Protects initial customer investment, no need to replace equipment entirely

AFCI anti-arc protection, peace of mind

invt



### Millisecond-level protection

- Millisecond-level arc detection and shutdown, effectively preventing fires



### Class II lightning protection

- Dual lightning protection design, effectively withstands lightning strikes, protects equipment safety

Standard DG interface, seamless connection, uninterrupted power at critical moments

invt



### Uninterrupted power during outages

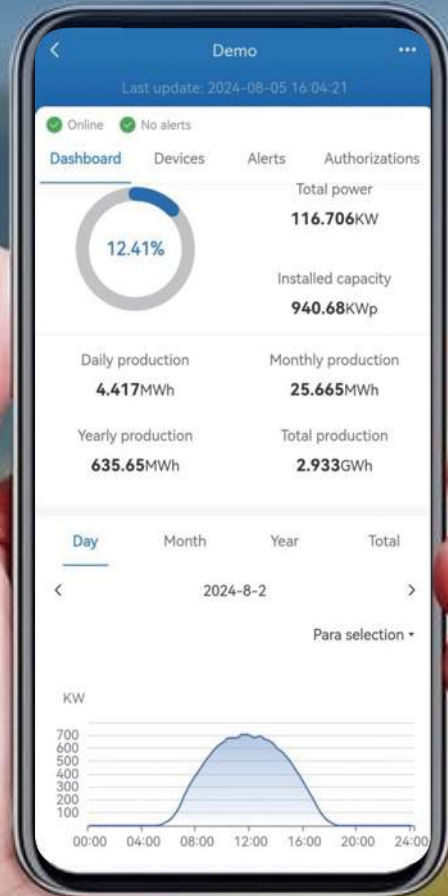
- Integrated DG interface, supports off-grid maximum output power of 1.5 times, meeting temporary high-power electricity needs



### Multiple modes for flexible choice

- Built-in EMS, freely switch between grid-connected/off-grid/backup modes, maximizing the use of green electricity

# Remote intelligent control, one-click, worry-free operation and maintenance



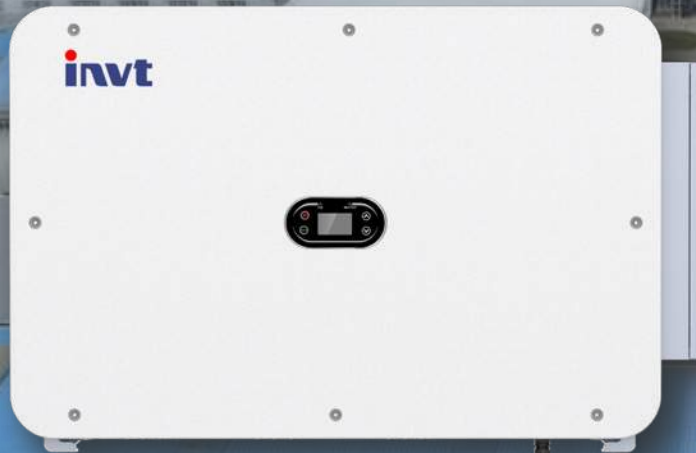
**Control from a thousand miles away**  
(O&M without leaving home)

**Earnings visible at any time**  
(Real-time data at a glance)

**Asset security assurance**  
(Intelligent monitoring with real-time alerts)

**Significantly reduce OPEX**  
(Save O&M costs)

# C&I grid-connected solution: Safe, Stable, Intelligent, and Efficient



XG100-125kW C&I Inverter

- AFCI**  
Arc fault detection (optional)
- 110%**  
110% overload output
- A**  
String current Detection (optional)
- ⚡**  
Anti-backflow (optional)
- ⚡**  
Built-in AC/DC level II surge protection
- 20A**  
Maximum string current

# Residential Project Reference



# Commercial and Industrial Project Reference



1.1MW

Slovakia

## Higher Generation, Green Transition

- Total Generation of 27.5 Million kWh Over the 25-Year Project Lifecycle, with an Average Annual Generation of Approximately 1.1 Million kWh Over 25 Years
- Saving Enterprises Approximately 210,000 Euros Annually, with a Project Payback Period of About 6 Years

25MW

Yiyang, Hunan

## Empowering to build a new benchmark for the Carbon Valley

- Annual power generation exceeding 25M kWh, With a total electricity sales revenue of ~ 347M RMB in 25 years, expected payback period of 5.5 years

## Worry-free O&M

- Achieve fault warning and rapid diagnosis

# CONTACT INFORMATION

## South Korea Office

Tel: +82 10 8496 3270

Email: darren@invt.com.cn

## Central Asia Office

Tel: +86 135 7181 6797

Email: volodya@invt.com.cn

## Morocco Office

Tel: +212 665 090 344

Email: lajjinri@invt.com.cn

## Mexico Office

Tel: +52 811 905 2345

Email: cuiqingsong@invt.com.cn

## Thailand Office

Tel: +66 98 924 2281

Email: realchen@invt.com.cn

## Netherlands Office

Tel: +31 40 798 3034

Email: ailinchang@invt.com.cn

## South Africa Office

Tel: +27 76 447 8002

Email: randimag@invt.com.cn

## Brazil Office

Tel: +55 11 98874 0054

Email: marcussilva@invt.com.cn

## Indonesia Office

Tel: +62 817 0588 188

Email: poncobaguswaskito@invt.com.cn

## Türkiye Office

Tel: +90 552 134 4234

Email: nealchen@invt.com.cn

## Nigeria Office

Tel: +234 803 447 1955

Email: jonathanjayijuo@invt.com.cn

## India Office

Tel: +91 72084 11845 +86 180 0256 8798

Email: zhangzhijun@invt.com.cn

## Saudi Arabia Office

Tel: +966 59 712 5050

Email: lili5770@invt.com.cn

SHENZHEN INVT ELECTRIC CO.,LTD.

✉ overseas@invt.com.cn

🌐 www.invt.com

📍 INVT Guangming Technology Building, Songbai Road, Matian, Guangming District, Shenzhen, China



@invtsolar